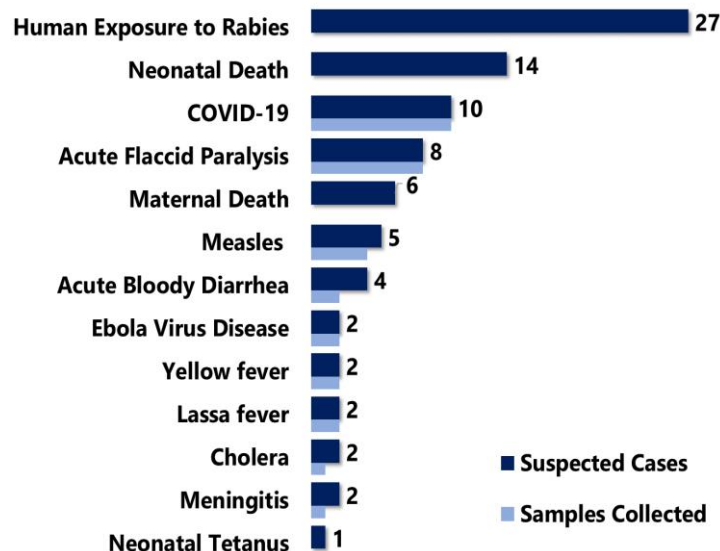


## Highlights

Figure 1: Public Health Events Reported during this week



## Keynotes and Events of Public Health Significance

- ♦ A total of **85** events of public health importance including **21** deaths were reported
- ♦ Completeness and timeliness of health facility reports were both **99%**
- ♦ **Ongoing Lassa fever** outbreak in Grand Bassa County
- ♦ **Ongoing EVD preparedness engagement** initiated at all level
- ♦ **Ten** new confirmed COVID-19 cases recorded from two counties

## Reporting Coverage

Table 1: Health Facility Weekly DSR Reporting Coverage, Liberia, Epi week 13, 2021

County	Expected Report from Health Facility	Reports Received	Received on Time	Completeness (%)	Timeliness (%)
Bomi	26	26	26	100	100
Bong	57	57	57	100	100
Gbarpolu	16	15	15	94	94
Grand Bassa	36	36	36	100	100
Grand Cape Mount	34	34	34	100	100
Grand Gedeh	24	24	24	100	100
Grand Kru	19	19	19	100	100
Lofa	61	61	61	100	100
Margibi	55	55	55	100	100
Maryland	27	27	27	100	100
Montserrado	365	365	365	100	100
Nimba	91	91	91	100	100
Rivercess	20	20	20	100	100
River Gee	20	20	20	100	100
Sinoe	37	37	37	100	100
<b>Liberia</b>	<b>888</b>	<b>887</b>	<b>887</b>	<b>99</b>	<b>99</b>

887(99%)  
Health facilities reported IDSR data

93 (100%)  
Health districts reported IDSR data

887(99%)  
Health facilities reported timely IDSR data

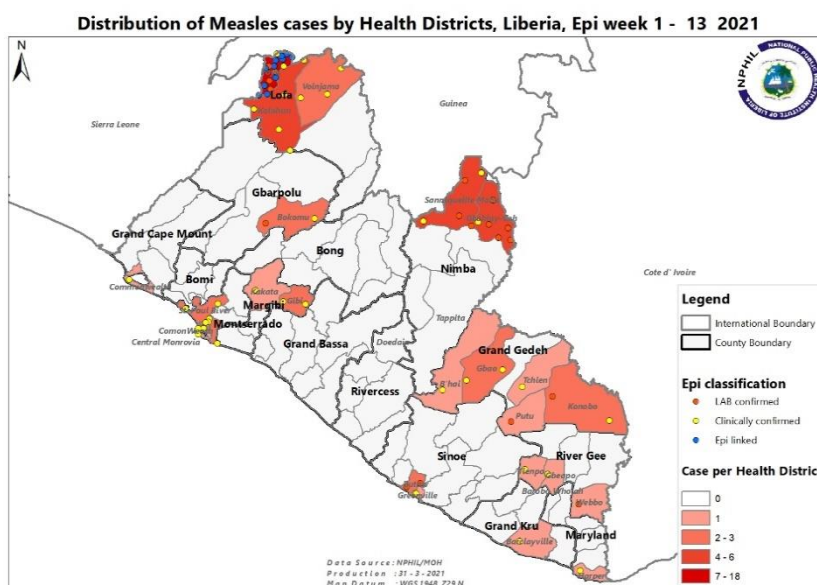
- ♦ The national target for weekly IDSR reporting is 80%. Health facility timeliness is monitored at health district level
- ♦ All Counties submitted weekly IDSR report on time to the national level

Legend: ≥80 <80

## Vaccine Preventable Diseases

### Measles

- 👉 Five (5) suspected cases were reported from Lofa (2), one each from Grand Kru, Maryland and, Bong Counties
  - Four (4) specimens were collected; one tested negative and 3 are pending testing
- 👉 Vaccination status among suspected cases
  - Vaccinated: 4 (80%)
  - Not vaccinated: 2 (20%)
- 👉 Age distribution among suspected cases
  - <5 years: 2 (40%)
  - ≥5 years: 3 (60%)
- 👉 Cumulatively, since Epi week one, ninety-eight (98) suspected cases have been reported
- 👉 Epi-classification is as follows: 63 confirmed (10 lab-confirmed, 42 clinically confirmed, 11 epi-linked) and 35 negatives



### Acute Flaccid Paralysis

- 👉 Eight (8) cases were reported from Montserrado (2), Margibi (2) one each from Nimba, Bong, Lofa and Grand Kru Counties
- 👉 Specimens were collected, shipped and pending testing
- 👉 Cumulatively, since Epi week one, twenty-six (26) cases have been reported

### Neonatal Tetanus

- 👉 One case was reported from Montserrado County
- 👉 Cumulatively, since Epi week one, five (5) cases have been reported

## Influenza-Like Illnesses

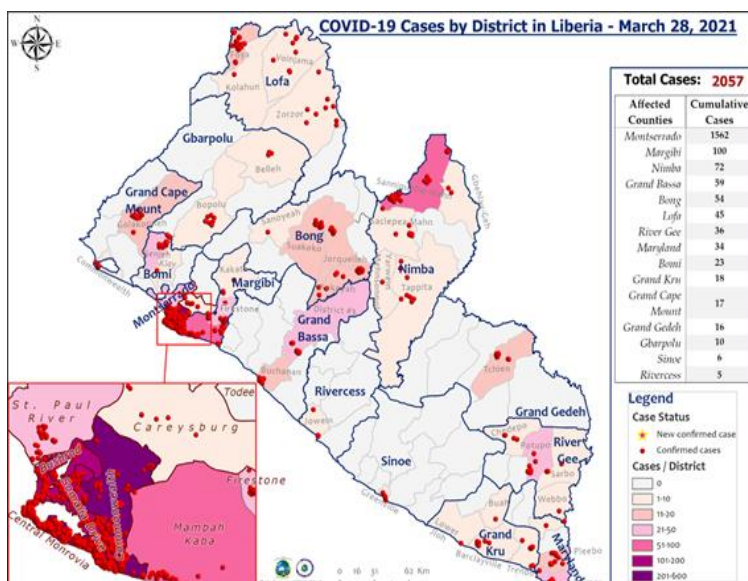
### Coronavirus Disease (COVID-19)

#### Outbreak

- 👉 Ten (10) new confirmed cases were reported from Montserrado (7) and Cape Mount (1) Counties with male accounting for 70 %
- 👉 Since Epi week one, a total of two hundred thirty-nine (239) confirmed cases have been reported
- 👉 Cumulatively, two thousand fifty-seven (2,057) confirmed cases recorded including 85 deaths

### Public Health Actions

- 👉 Daily IMS coordination meeting on-going
- 👉 Surveillance activities including active case search, contact tracing and case investigation on-going in affected counties using WHO interim guidelines
- 👉 Reinforcing hand washing in all public areas (markets, health facilities, public offices, checkpoints etc.)
- 👉 Case management ongoing for confirmed cases
- 👉 Compulsory testing among outgoing and incoming travelers ongoing



## Viral Hemorrhagic Diseases

### Lassa fever

- 👉 Two (2) suspected cases were reported from Grand Bassa and Bong Counties
- 👉 Specimens were collected and tested negative
- 👉 Cumulatively, since Epi week one, twenty-seven (27\*) suspected cases have been reported including six (6) deaths
  - 2 positive, 19 negative and 6 specimens not collected
  - Proportion of suspected cases with sample collected 78% (21/27)
  - Proportion of suspected cases with sample tested 70% (19/27)

\* Six suspected cases have been delisted due to lack of specimen collection: Bong (5) and Grand Bassa (1) Counties

### Outbreak

#### District 3A&B, Grand Bassa County

- 👉 No new confirmed case reported this week
- 👉 The confirmed case, a 38-year-old female and a resident of MIE Field, Compound # 3, presented with symptoms of red eyes, weakness, poor appetite, sore throat, vomiting, coughing on 1<sup>st</sup> March 2021 and was unresponsive to treatment. Based on the suspicion for Lassa, the case patient was admitted and isolated at LAC hospital on 4<sup>th</sup> March. Specimen was collected on 6<sup>th</sup> March 2021 and tested positive on 8<sup>th</sup> March 2021. The case patient expired on 7<sup>th</sup> March while awaiting the lab results
- 👉 All 14 contacts were line listed have completed 21 days follow-up

#### Public Health Actions

- 👉 IPC assessment conducted to reinforce IPC practices
- 👉 Active case search and community engagement ongoing

### Yellow fever

- 👉 Two suspected cases were reported from Lofa and Grand Kru Counties
- 👉 Specimens were collected and are pending testing
- 👉 Cumulatively since Epi week one, twenty-five (25) suspected cases have been reported with 17 negative, 6 pending testing and 2 specimens were not collected
  - Proportion of suspected case with sample collected 92% (23/25)
  - Proportion of suspected case with sample tested 68% (17/25)

### Ebola Virus Disease

- 👉 Two (2) alerts were reported from Lofa (dead) and Montserrado Counties
- 👉 Specimens were collected and tested negative
- 👉 Cumulatively since Epi week one, thirteen (13) alerts have been reported and all tested negative
  - Proportion of suspected case with sample collected 100% (13/13)
  - Proportion of suspected case with sample tested 100% (13/13)

## Diarrheal Diseases

### Acute Bloody Diarrhea (Suspected Shigellosis)

- 👉 Four (4) cases were reported from Margibi, Grand Gedeh, Grand Kru and Maryland Counties
  - Two specimens were collected and pending testing:
- 👉 Cumulatively, since Epi week one, ninety-one (95) suspected shigellosis cases have been reported with 45 specimens collected, 12 tested negative and thirty-three (33) pending laboratory testing

### Severe Acute Watery Diarrhea (Suspected Cholera)

- 👉 Two (2) suspected cases were reported from Nimba and Margibi Counties
- 👉 One specimen was collected and pending testing
- 👉 Cumulatively, since Epi week one, thirty (30) suspected cholera cases have been reported

## Other Reportable Diseases

### Animal Bites (Human Exposure to Rabies)

- 👉 Twenty-seven (27) animal bite cases were reported from: Maryland (7), Nimba (6), Grand Bassa (4), Grand Kru (4), Margibi (2), Bong (2), Rivercess (1) and Montserrado (1), Counties
  - No prophylaxes were administered at health facility
- 👉 Cumulatively, since Epi week one, four hundred-thirty-four (434) animal bite cases have been reported

### Meningitis

- 👉 Two suspected cases were reported from Grand Bassa County
- 👉 One specimen was collected and pending testing
- 👉 Cumulatively, since Epi week one, thirteen (13) suspected cases have been reported

## Events of Public Health Importance

### Maternal Mortality

- 👉 Six deaths were reported from Montserrado (4) and Bong (2) Counties
- 👉 Causes of death: sepsis (2), PPH, anemia, eclampsia and one pending investigation
- 👉 Reporting sites: Health facilities-6, Community-0
- 👉 Cumulatively, since Epi week one, fifty-three (53) deaths have been reported

### Neonatal Mortality

- 👉 Fourteen (14) deaths were reported from Montserrado (9), Nimba (3), Margibi (1) and Lofa (1) Counties
- 👉 Causes of deaths: neonatal sepsis (9), birth asphyxia (4), neonatal jaundice (1)
- 👉 Reporting sites: Health facility-14, Community-0
- 👉 Cumulatively, since Epi week one, one hundred-eighty-eight (188) deaths have been reported

### Unexplained Death

- 👉 Zero (0) deaths were reported
- 👉 Cumulatively, since Epi week one, one (1) death has been reported

## Cross Border Surveillance Update

- 👉 A total of 5,162 travelers recorded for the week with incoming travelers accounting for 45% and outgoing travelers 55%
- 👉 None of the travelers were reactive for COVID-19
- 👉 The airport accounted for the highest number of travelers for the week

**Table 2: Cross border activity at the PoE for Incoming and Outgoing Travelers, Liberia, Epi week 13, 2021**

Type of PoE	Point of Entry	Weekly Total	Arrival	Departure	Yellow Book Issued	Yellow Book Damaged	Card Replaced	Travelers Vaccinated	Alerts Verified	COVID-19 Reactive
Airport	James S. Paynes	81	33	48	0	0	0	0	0	0
	Robert International Airport	2995	1159	1836	12	12	0	0	0	0
	Freeport of Monrovia	240	120	120	0	0	0	0	0	0
Seaport	Harper	0	0	0	0	0	0	0	0	0
	Buchanan Port	166	83	83	0	0	0	0	0	0
	Bo Water Side	1295	761	534	8	8	0	0	0	0
Land Crossing	Ganta	247	103	144	0	0	0	0	0	0
	Yekepa	132	49	83	0	0	0	0	0	0
	Longuatu	6	6	0	0	0	0	0	0	0
Total travelers		5162	2314	2848	20	20	0	0	0	0



# Liberia IDSR Epidemiology Bulletin

2021 Epi-week 13 (March 22 – 28, 2021)



## Public Health Measures

### National level

- 👉 Providing technical, logistical and financial support to counties
- 👉 Heighten surveillance in affected and surrounding communities
- 👉 Publishing situational reports to inform stakeholders

### County level

- 👉 Publication of situational reports to inform stakeholders
- 👉 Active case search ongoing in affected and surrounding communities
- 👉 Contact tracing, health education, and community engagement ongoing in affected communities
- 👉 Case management ongoing for isolated cases

# Appendix

## Summary of Immediately Reportable Diseases, Conditions, and Events by County

Counties			Bomi	Bong	Gbarpolu	Grand Bassa	Grand Cape Mount	Grand Gedeh	Grand Kru	Lofa	Margibi	Maryland	Montserrado	Nimba	Rivercess	River Gee	Sinoe	Total Weekly	Cumulative Reported	Cumulative Lab-confirmed
No. of Expected Health District			4	9	5	8	5	6	5	6	4	6	7	6	6	6	10	93		
No. of Health District Reported			4	8	5	8	5	6	5	5	4	6	7	6	6	6	10	91		
Vaccine Preventable Diseases	Acute Flaccid Paralysis (Suspected Polio)	A	0	1	0	0	0	0	1	1	2	0	2	1	0	0	0	8	26	0
		D	0	0	0	0	0	0	0	0	0	0	0	0	0	0	0	0	0	0
	Measles	A	0	1	0	0	0	0	1	2	0	1	0	0	0	0	0	5	98	10
		D	0	0	0	0	0	0	0	0	0	0	0	0	0	0	0	0	0	0
	Neonatal Tetanus	A	0	0	0	0	0	0	0	0	0	0	1	0	0	0	0	1	5	0
		D	0	0	0	0	0	0	0	0	0	0	0	0	0	0	0	0	0	0
	Yellow fever	A	0	0	0	0	0	0	1	1	0	0	0	0	0	0	0	2	25	0
		D	0	0	0	0	0	0	0	0	0	0	0	0	0	0	0	0	0	0
Viral Hemorrhagic Fever	Dengue fever	A	0	0	0	0	0	0	0	0	0	0	0	0	0	0	0	0	0	0
		D	0	0	0	0	0	0	0	0	0	0	0	0	0	0	0	0	0	0
	Ebola Virus Disease	A	0	0	0	0	0	0	0	0	0	0	1	0	0	0	0	1	11	0
		D	0	0	0	0	0	0	0	1	0	0	0	0	0	0	0	1	2	0
	Lassa fever	A	0	1	0	1	0	0	0	0	0	0	0	0	0	0	0	2	21	0
		D	0	0	0	0	0	0	0	0	0	0	0	0	0	0	0	0	6	2
Influenza-Like Illnesses	COVID-19	A	0	0	0	0	1	0	0	0	0	0	9	0	0	0	0	10	239	2057
		D	0	0	0	0	0	0	0	0	0	0	0	0	0	0	0	0	0	0
Diarrheal Diseases	Acute Bloody Diarrhoea (Shigellosis)	A	0	0	0	0	0	1	1	0	1	1	0	0	0	0	0	4	95	0
		D	0	0	0	0	0	0	0	0	0	0	0	0	0	0	0	0	0	0
	Severe Acute Watery Diarrhoea (Cholera)	A	0	0	0	0	0	0	0	0	0	1	0	0	1	0	0	2	30	0
		D	0	0	0	0	0	0	0	0	0	0	0	0	0	0	0	0	0	0
Events of Public Health Importance	Maternal Mortality	D	0	2	0	0	0	0	0	0	0	0	4	0	0	0	0	6	53	
	Neonatal Mortality	D	0	0	0	0	0	0	0	1	1	0	9	3	0	0	0	14	188	
	Adverse Events Following Immunization (AEFI)	A	0	0	0	0	0	0	0	0	0	0	0	0	0	0	0	0	1	0
		D	0	0	0	0	0	0	0	0	0	0	0	0	0	0	0	0	0	0
	Unexplained Cluster of Health Events/Disease	A	0	0	0	0	0	0	0	0	0	0	0	0	0	0	0	0	0	0
		D	0	0	0	0	0	0	0	0	0	0	0	0	0	0	0	0	0	0
Other Reportable Diseases	Monkeypox	A	0	0	0	0	0	0	0	0	0	0	0	0	0	0	0	0	0	0
		D	0	0	0	0	0	0	0	0	0	0	0	0	0	0	0	0	0	0
	Tuberculosis	A	0	0	0	0	0	0	0	0	0	0	0	0	0	0	0	0	0	0
		D	0	0	0	0	0	0	0	0	0	0	0	0	0	0	0	0	0	0
	Human Exposure to Animal bites (Suspected Rabies)	A	0	2	0	4	0	0	4	0	2	7	1	6	1	0	0	27	343	0
		D	0	0	0	0	0	0	0	0	0	0	0	0	0	0	0	0	0	0
	Meningitis	A	0	0	0	2	0	0	0	0	0	0	0	0	0	0	0	2	13	0
		D	0	0	0	0	0	0	0	0	0	0	0	0	0	0	0	0	0	0
	Unexplained Cluster of deaths	A	0	0	0	0	0	0	0	0	0	0	0	0	0	0	0	0	0	0
		D	0	0	0	0	0	0	0	0	0	0	0	0	0	0	0	0	0	0
Neglected Tropical Diseases	Buruli Ulcer	A	0	0	0	0	0	0	0	0	0	0	0	0	0	0	0	0	0	0
		D	0	0	0	0	0	0	0	0	0	0	0	0	0	0	0	0	0	0
	Yaws	A	0	0	0	0	0	0	0	0	0	0	0	0	0	0	0	0	0	0
		D	0	0	0	0	0	0	0	0	0	0	0	0	0	0	0	0	0	0
TOTAL			0	7	0	7	1	1	8	6	7	9	27	11	1	0	0	85	1156	0

D = Dead A = Alive



## Notes

- 👉 **Completeness** refers to the proportion of expected weekly IDSR reports received (target: ≥80%)
- 👉 **Timeliness** refers to the proportion of expected weekly IDSR reports received by the next level on time (target: ≥80%). Time requirement for weekly IDSR reports:
  - Health facility - required on or before 5:00pm every Saturday to the district level
  - Health district - required on or before 5:00pm every Sunday to the county level
  - County - required on or before 5:00pm every Monday to the national level
- 👉 **Non-polio AFP rate** is the proportion of non-polio AFP cases per 100,000 among the estimated population under 15 years of age in 2017 (annual target: ≥2/100,000)
- 👉 **Non-measles febrile rash illness rate** refers to the proportion of Negative measles cases per 100,000 population
- 👉 **Annualized maternal mortality rate** refers to the maternal mortality rate of a given period less than one year and it is the number of maternal deaths per 100,000 live births
- 👉 **Annualized neonatal mortality rate** refers to the neonatal mortality ratio of a given period less than one year and it is the number of neonatal deaths per 1,000 live births
- 👉 **Epi-linked** refers to any suspected case that has not had a specimen taken for serologic confirmation but is linked to a laboratory confirmed case
- 👉 **Confirmed case** refers to a case whose specimen has tested positive or reactive upon laboratory testing, or has been classified as confirmed by either epidemiologic linkage with a confirmed case, or clinical compatibility with the disease or condition

Epidemiological bulletin published with support of WHO and CDC

### For comments or questions, please contact

**Thomas K. Nagbe, MPH**

Director,

Infectious Disease and Epidemiology Division

National IHR Focal Person

National Public Health Institute of Liberia

Republic of Liberia

Email: [tnknue31112@gmail.com](mailto:tnknue31112@gmail.com)

Phone: +231 886 937386/777442444

Website: [www.nphil.gov.lr](http://www.nphil.gov.lr)

**Ralph W. Jetoh, MD, MPH**

Deputy Director

Infectious Disease and Epidemiology Division

National Public Health Institute of Liberia

Republic of Liberia

Email: [ralphica2000@gmail.com](mailto:ralphica2000@gmail.com)

Phone: +231 886526388/777372655

Website: [www.nphil.gov.lr](http://www.nphil.gov.lr)

## National Public Health Institute of Liberia (NPHIL)

### MISSION

To prevent and control public health threats by promoting healthy outcomes and serving as a source of knowledge

### VISION

A center of excellence to create health outcomes for Liberians through a strong preventive health system and expertise

## EDITORIAL TEAM

### DIDE / NPHIL

R. N. George

A. N. Miannah

I. P. Pewu

T. O. Yeabah

E. Dwalu

G. B. Williams

S. K. Zayzay

L. W. Colee

T. L. Hall

S. L. Flomo

M. S. Quiah

C. T. Yeah

L. K. Seepoe

W. T. Gayflor

H. M. Sherman

A. B. Corvah

M. G. Jeuronlon

M.D. Vaye

### Ministry of Health

### WHO – Liberia Office

## Data sources

Data and information is provided by the fifteen County Surveillance Officers and National Public Health Reference Laboratory via regular weekly reports, telephone calls and email exchanges. Situations are evolving and dynamic therefore numbers stated are subject to change.